

# OPERATIONAL EFFICIENCY FUELED BY HYPER- AUTOMATION

DIGI X AUTOMATION

#DIGIFRIDAYS



# #DIGIFRIDAYS



**DIGI x ESG**

**June 2<sup>nd</sup>**

**@15.00 CEST**



**DIGI x E-commerce**

**June 16<sup>th</sup>**

**@15.00 CEST**



**DIGI x Automation**

**June 9<sup>th</sup>**

**@15.00 CEST**



**DIGI x CX**

**June 23<sup>rd</sup>**

**@15.00 CEST**





**DIGI x  
AUTOMATION**  
**#DIGIFRIDAYS**

**Digi x Automation  
Operational Efficiency Fueled  
by Hyper-Automation**

**Thorsten Kranz**  
Head of Data Science Implementation  
DPDHL Group

**Robotics: Accelerated  
Digitalization Program at DSC**

**Sally Miller**  
Global Digital Transformation Officer &  
Chief Information Officer North America  
DHL Supply Chain

**Group-Wide IoT  
(Internet of Things) solutions**

**Axel Wiebracht**  
VP, Head of IoT Center of Excellence  
DPDHL Group

**EVO and RAPTOR: Automation  
& AI at Road Freight**

**Stefano Arganese**  
Chief Transformation Officer  
DHL Freight

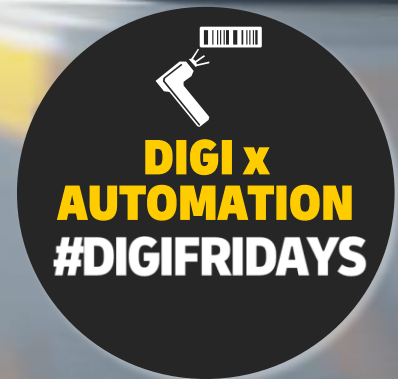


# OPERATIONAL EFFICIENCY FUELED BY HYPER-AUTOMATION

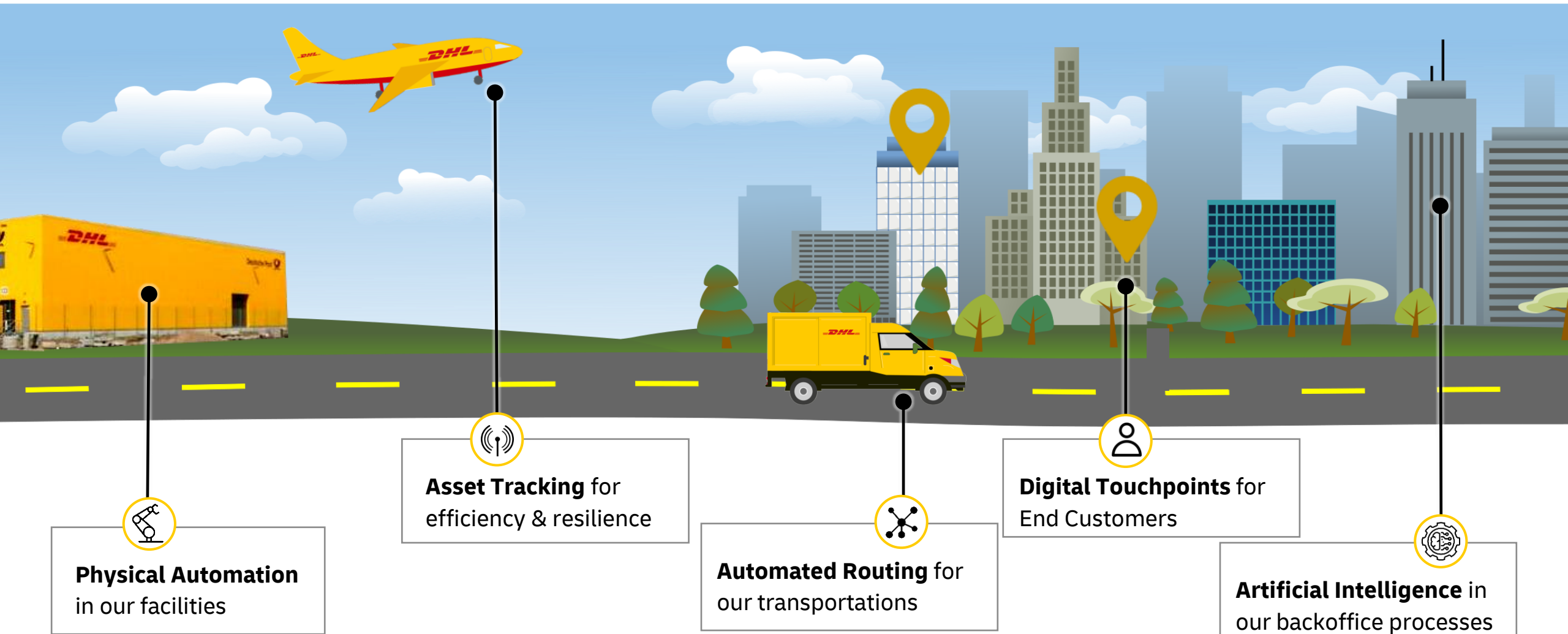
## DIGI X AUTOMATION

THORSTEN KRANZ

HEAD OF DATA SCIENCE IMPLEMENTATION  
DPDHL GROUP



# Digitalization and Automation are key enablers for logistics, as our profitable core



# We incubate innovation in our Group Centers of Excellence



## Data Analytics

Scalable Artificial Intelligence, Machine Learning (ML) and Optimization solutions for the Group



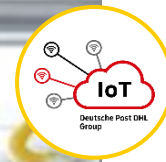
## Data Solutions

Scalable Data & ML platforms to enable Advanced Analytics and Artificial Intelligence



## APIs

Shared platform for internal and customer-facing APIs, e.g., for harmonized tracking and location finding



## Internet of Things

X-divisional scalable core operations solutions for asset tracking, shipment tracking & condition monitoring



## Blockchain

Multi-industry Blockchain platform for DPDHL as a backbone for functionalities and use cases



## Automation of Operations

Support testing and integration of robotics and computer vision technology for our operations

in close practical interaction with our divisions



# Advanced Analytics and Artificial Intelligence – taken to the next level



## DHL Data & Analytics

- Transitioned from **Centers of Excellence** to a **Service Line** in Global Business Service
- **Constant growth** of footprint and headcount
- Implementing **high-impact AI Use Cases** with all divisions
- Providing **platforms** and **value add services** across the group

**PCT**  
ProductClassificationTool

**IOR**  
InvoiceOverdueRisk

**TREX**  
TourRoutingwithExperience

# Advanced Analytics and Artificial Intelligence on a next level Product Classification Tool



**Automating** customs processes → AI-based prediction of **commodity codes**



**Acceleration of processes**



**Supporting Customs Audit**

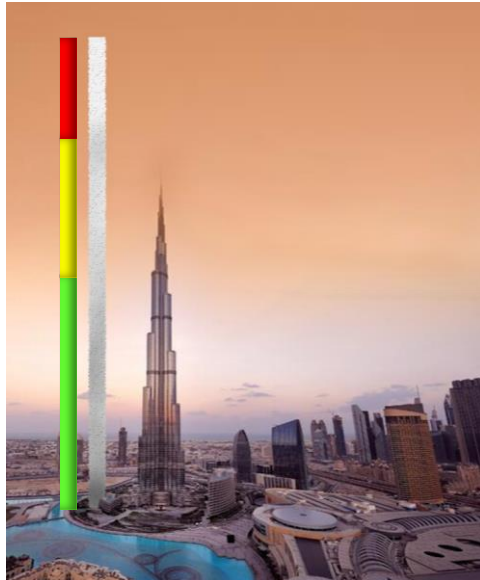


**Improve Master Data Quality**





# Advanced Analytics and Artificial Intelligence on a next level Invoice Overdue Risk



Supporting **accounts receivable** processes



**Predicting invoices with high risk** of delayed payment



High impact on Free Cash Flow



Increased AR efficiency

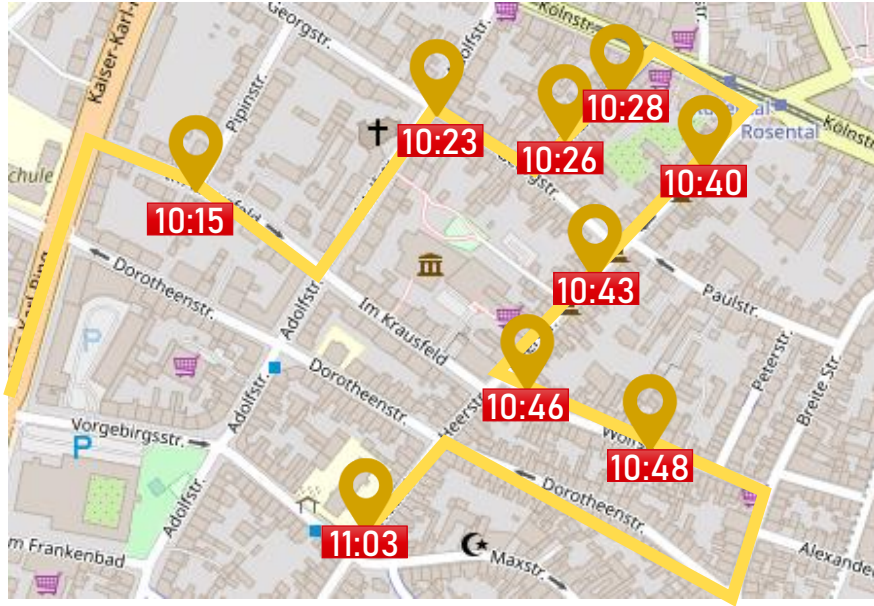


Improved interactions

**IOR**  
InvoiceOverdueRisk

# Advanced Analytics and Artificial Intelligence on a next level

## Tour Routing with Experience



Learning from **courier behaviour**



**Better tours with higher loyalty**



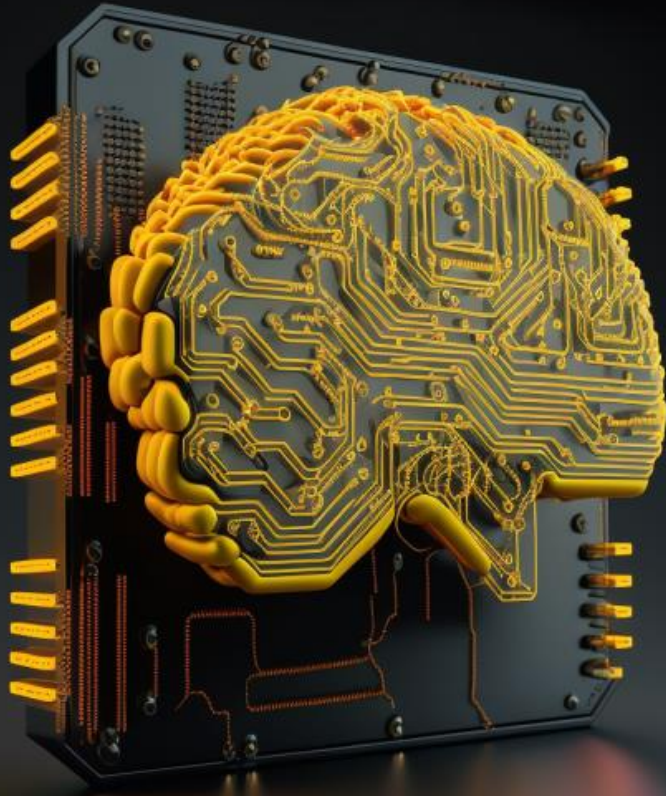
Enabling digital features



Increasing efficiency

**TREX**  
TourRoutingwithExperience

## We are adopting Generative AI at Deutsche Post DHL Group



# GAIA

Cross-functional GAIA Squad established

- ✓ Providing secure access to Generative AI tools to our workforce
- ✓ Push awareness & enablement across the Group
- ✓ Driving Governance & Strategy for Generative AI
- ✓ Implementation of **high-impact** use cases, e.g.,
  - Supporting digital customer touchpoints
  - Automating text-centric processes
  - Leveraging internal knowledge repositories via chatbots



**Physical Automation**

**Robotics: Accelerated  
Digitalization Program at DSC**  
Sally Miller



**Asset Tracking**

**Group-Wide  
IoT solutions**  
Axel Wiebracht



**Automated Routing & Tasks**

**EVO & RAPTOR  
at DHL Freight**  
Stefano Arganese



# ACCELERATED DIGITALIZATION @DSC

ALL IN ON INNOVATION.  
FUTURE OF SUPPLY CHAIN  
IS ALREADY HERE

SALLY MILLER

GLOBAL DIGITAL TRANSFORMATION OFFICER  
CHIEF INFORMATION OFFICER NORTH AMERICA  
DHL SUPPLY CHAIN



DHL Supply Chain

#1

contract logistics player worldwide

We are

>2x

the size of our closest competitors and the only one being able to scale globally

50+

countries covered worldwide













### Contract logistics players (Market shares based on 2021<sup>1)</sup>)



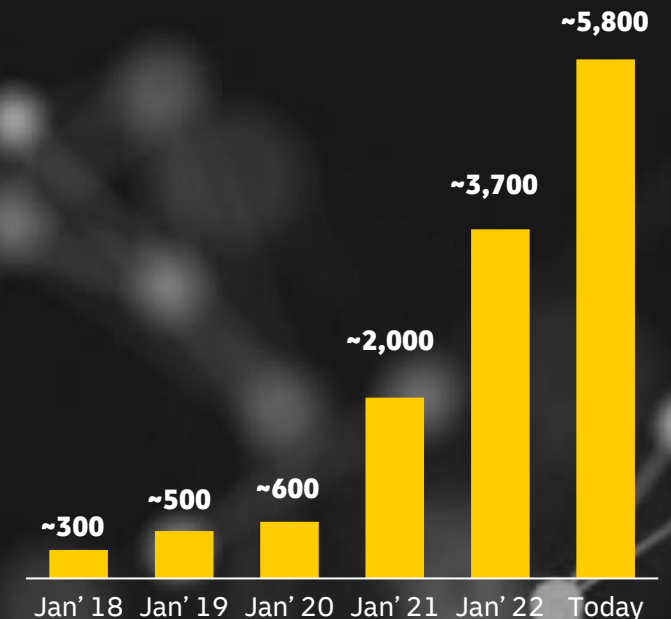
1) market shares are calculated based on companies' respective contract logistics revenues. Source: DPDHL estimates.

# Our unique ecosystem of integrated IT solutions, robotics and data analytics applications maximize value for us and our customers

**12 Focus technologies** identified along entire logistics process

<p><b>Assisted Picking Robots</b></p> 	<p><b>(un)Loading Technologies</b></p> 	<p><b>Intelligent Process Automation</b></p> 
<p><b>Goods-to-Person Robots</b></p> 	<p><b>Data Analytics</b></p> 	<p><b>Sortation Technologies</b></p> 
<p><b>Packaging Technologies</b></p> 	<p><b>Smart Operations</b></p> 	<p><b>Supporting Robots</b></p> 
<p><b>Indoor Robotic Transport</b></p> 	<p><b>Wearable Devices</b></p> 	<p><b>Asset Tracking &amp; Monitoring</b></p> 

# of digitalization projects live

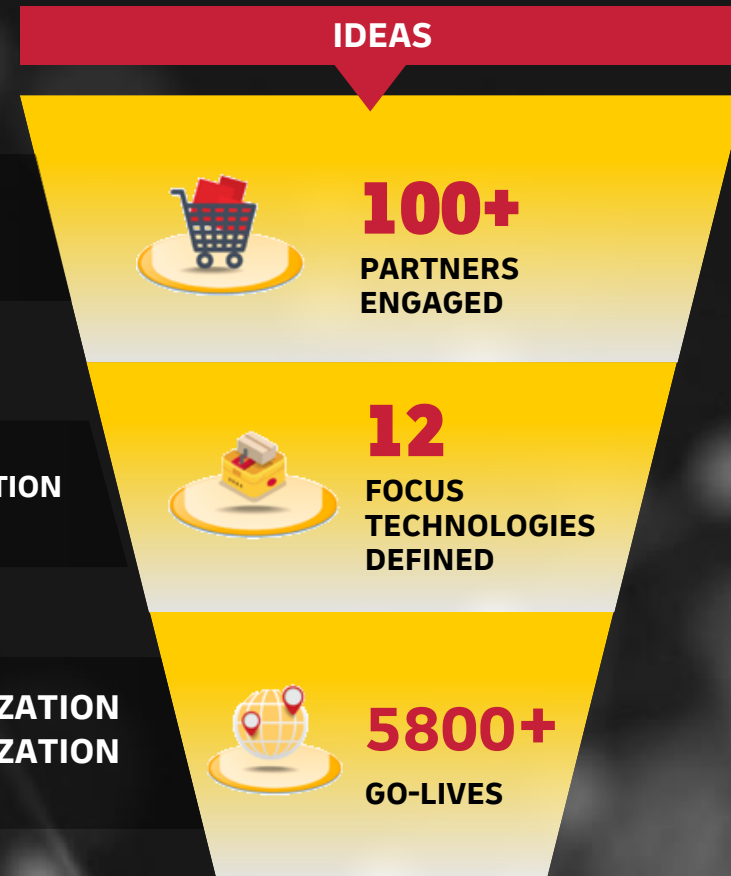


**90%+** of our sites implemented at least one focus technology already today  
**100%** by end of the year

We bring key digital technologies to a wider number of operations through our focused digital funnel

OUR DIGITAL JOURNEY STARTED YEARS AGO

IT IS FAR ADVANCED AND INDUSTRY-LEADING





# After successful PoCs and a first deployment, Boston Dynamics Stretch will soon be a product to scale across the globe



**Case unloading**

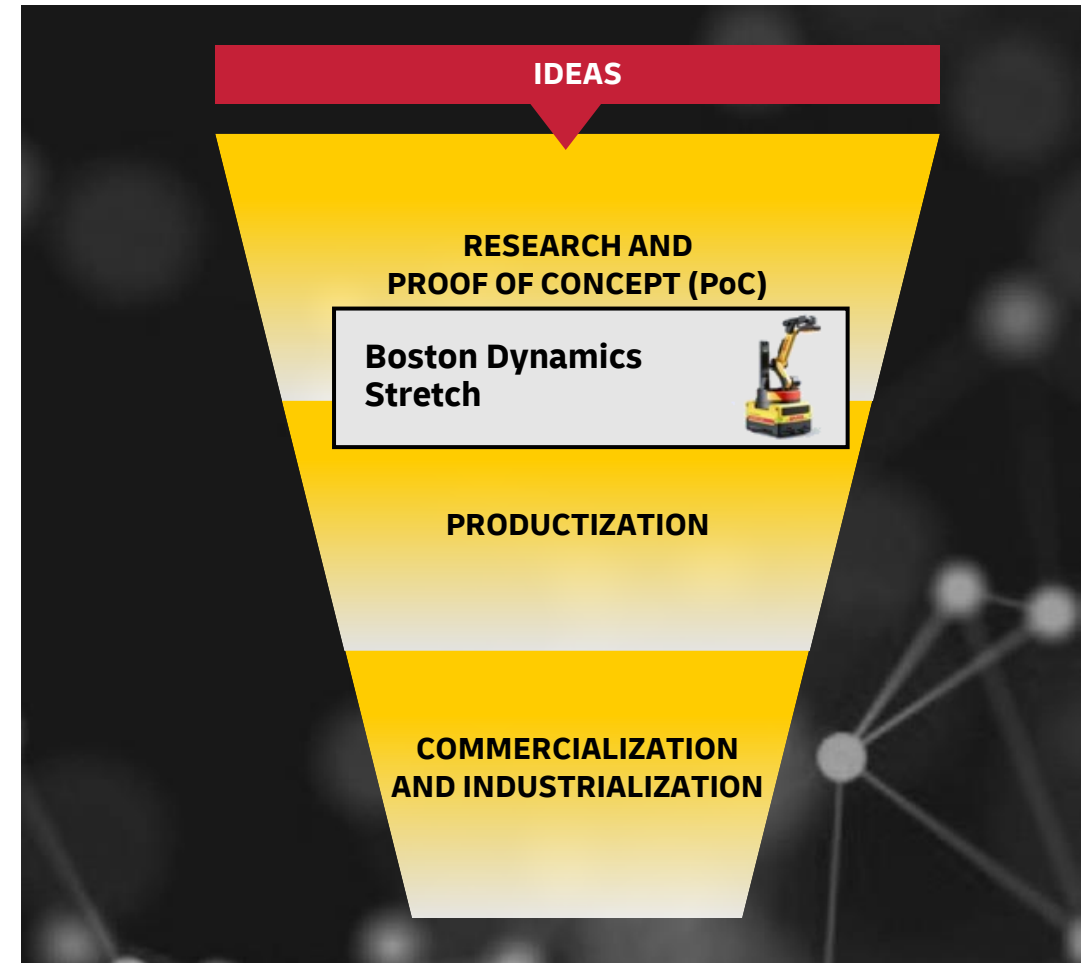
Use case

**1**

# units live (06/23)

**North America**

Geographies covered



# 20 Fox Robotics autonomous pallet unloaders; We are partnering with Fox to bring pallet unloading to other regions



**Pallet unloading**

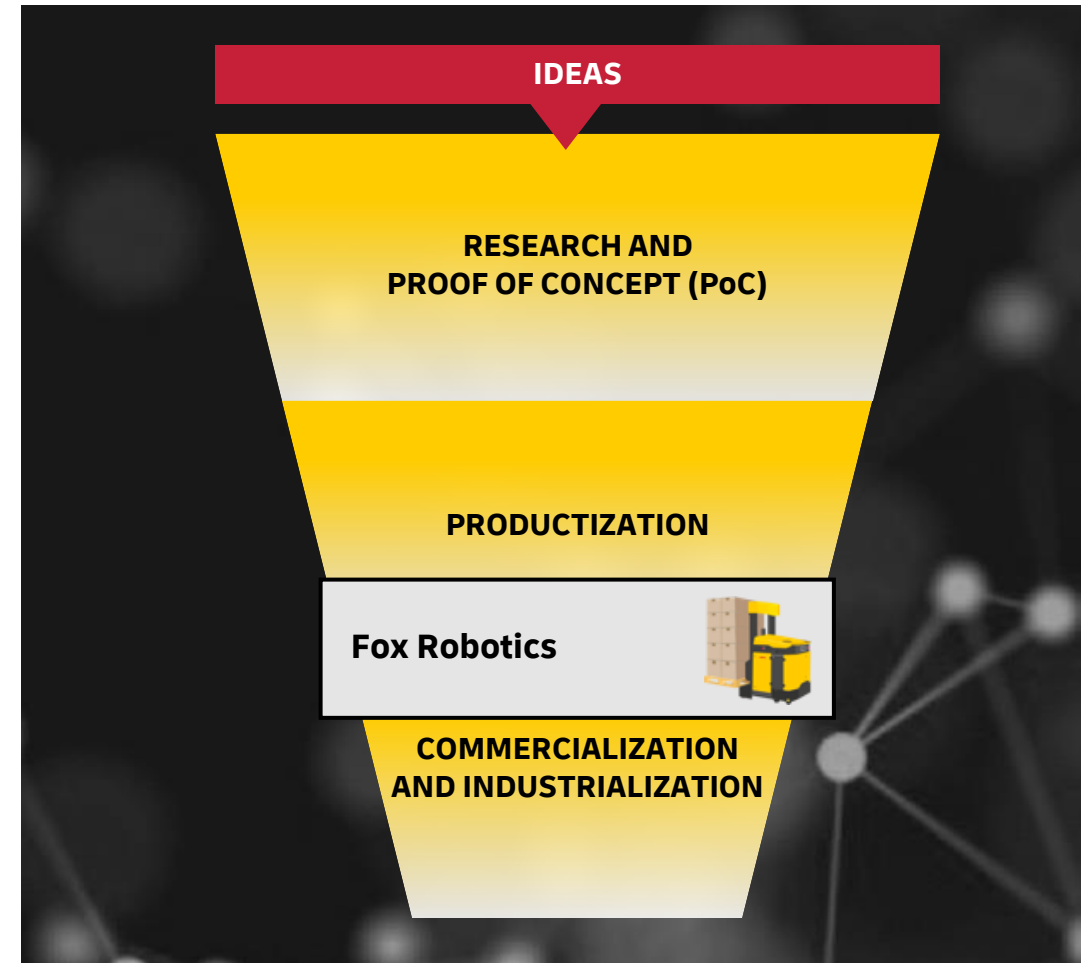
Use case

**20**

# units live (06/23)

**North America**

Geographies covered



# 2,500+ assisted picking robots are deployed across all geographies; Continued focus on operational efficiency gains



**Each picking**

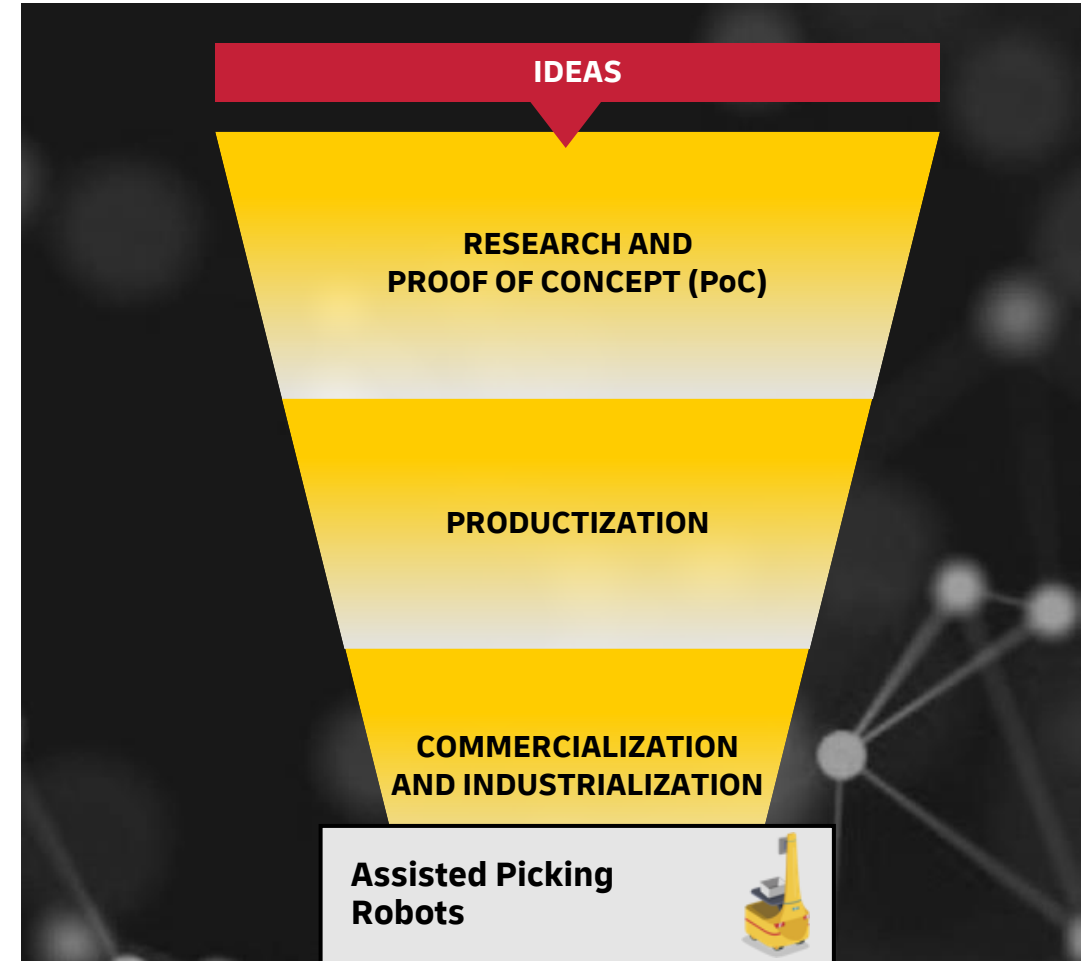
Use case

**2,500+**

# units live (06/23)

**Global**

Geographies covered



# Applying our funnel approach for data analytics / AI to maximize the impact of our scale advantage

**2000+**

facilities  
worldwide

## Warehousing and transport safety



## Inventory accuracy



## Generative AI for back-office tasks (and much more)

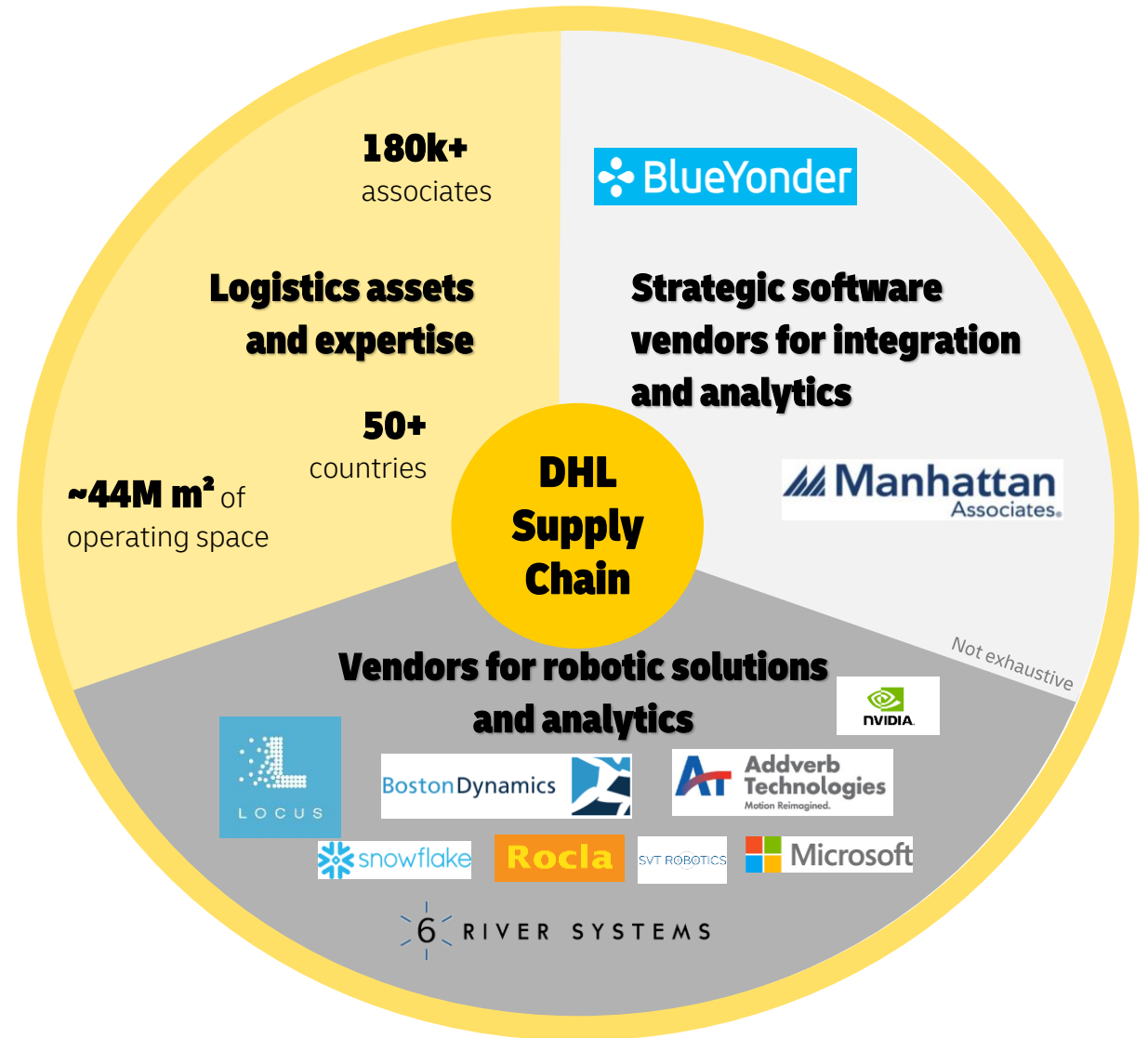


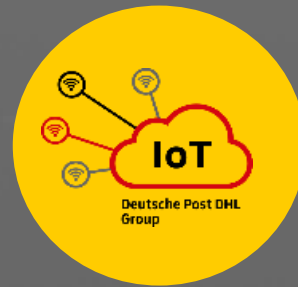
## Vision & sensing technology for robots



**...and  
much more**

We are best in ORCHESTRATING multiple vendors of IT solutions, robotics and AI/ analytics into our ecosystem



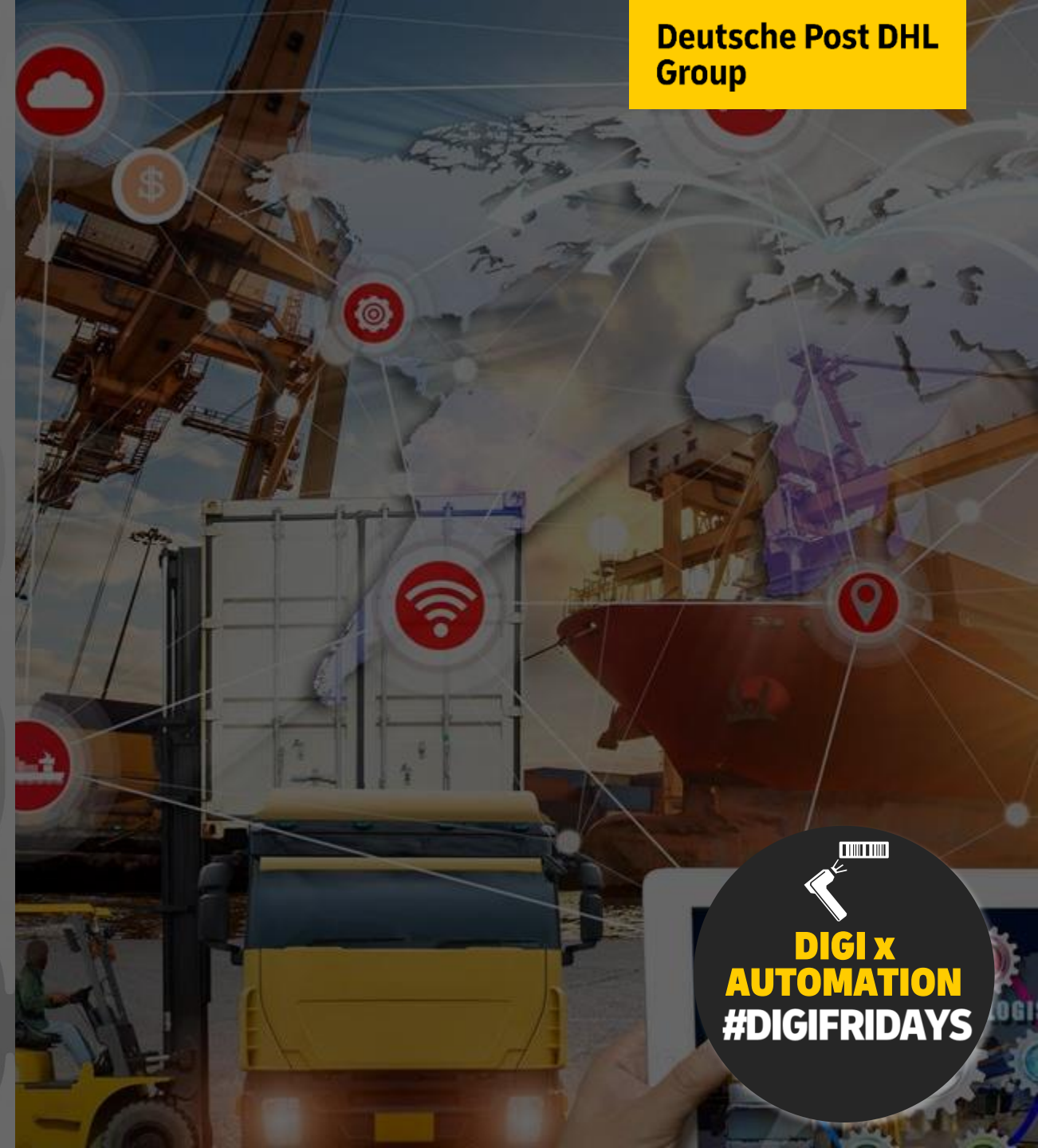


# EXPERIENCE IOT @DPDHL

## DIGITAL TRACKING OF PHYSICAL ASSETS

AXEL WIEBRACHT

VP, HEAD OF IOT CENTER OF EXCELLENCE  
DPDHL GROUP

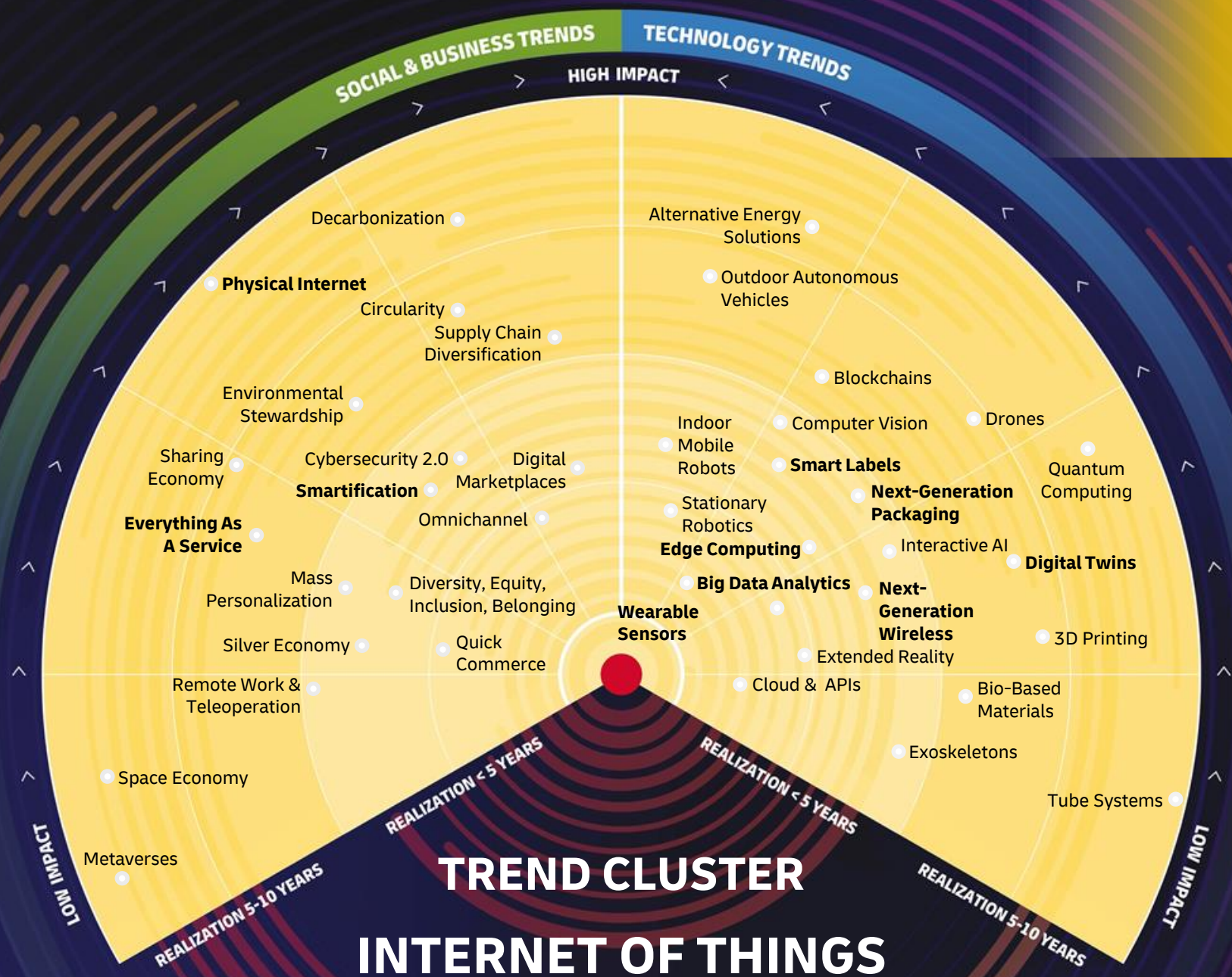


  
**DIGI x  
AUTOMATION**  
**#DIGIFRIDAYS**

# THE LOGISTICS TREND RADAR

Delivering insight today, creating value tomorrow. 6.0

DHL INNOVATION CENTER



SOCIAL & BUSINESS TRENDS      TECHNOLOGY TRENDS

HIGH IMPACT

LOW IMPACT

LOW IMPACT

REALIZATION < 5 YEARS

REALIZATION < 5 YEARS

REALIZATION 5-10 YEARS

REALIZATION 5-10 YEARS

TREND CLUSTER  
INTERNET OF THINGS

**High Impact**  
Revolutionary applications that are potentially disruptive.

**Low Impact**  
Evolutionary changes with incremental improvements.

**Realization**  
The common way of operating and doing business in logistics.

- Decarbonization
- Alternative Energy Solutions
- Physical Internet
- Outdoor Autonomous Vehicles
- Circularity
- Supply Chain Diversification
- Environmental Stewardship
- Blockchains
- Smartification
- Marketplaces
- Digital Marketplaces
- Smart Labels
- Indoor Mobile Robots
- Computer Vision
- Drones
- Quantum Computing
- Everything As A Service
- Sharing Economy
- Cybersecurity 2.0
- Stationary Robotics
- Edge Computing
- Next-Generation Packaging
- Interactive AI
- Digital Twins
- Omnichannel
- Big Data Analytics
- Next-Generation Wireless
- Wearable Sensors
- Mass Personalization
- Diversity, Equity, Inclusion, Belonging
- Extended Reality
- 3D Printing
- Silver Economy
- Quick Commerce
- Cloud & APIs
- Bio-Based Materials
- Remote Work & Teleoperation
- Exoskeletons
- Tube Systems
- Space Economy
- Metaverses

# Where do we use IoT in Logistics?



**SMART OPERATIONS**



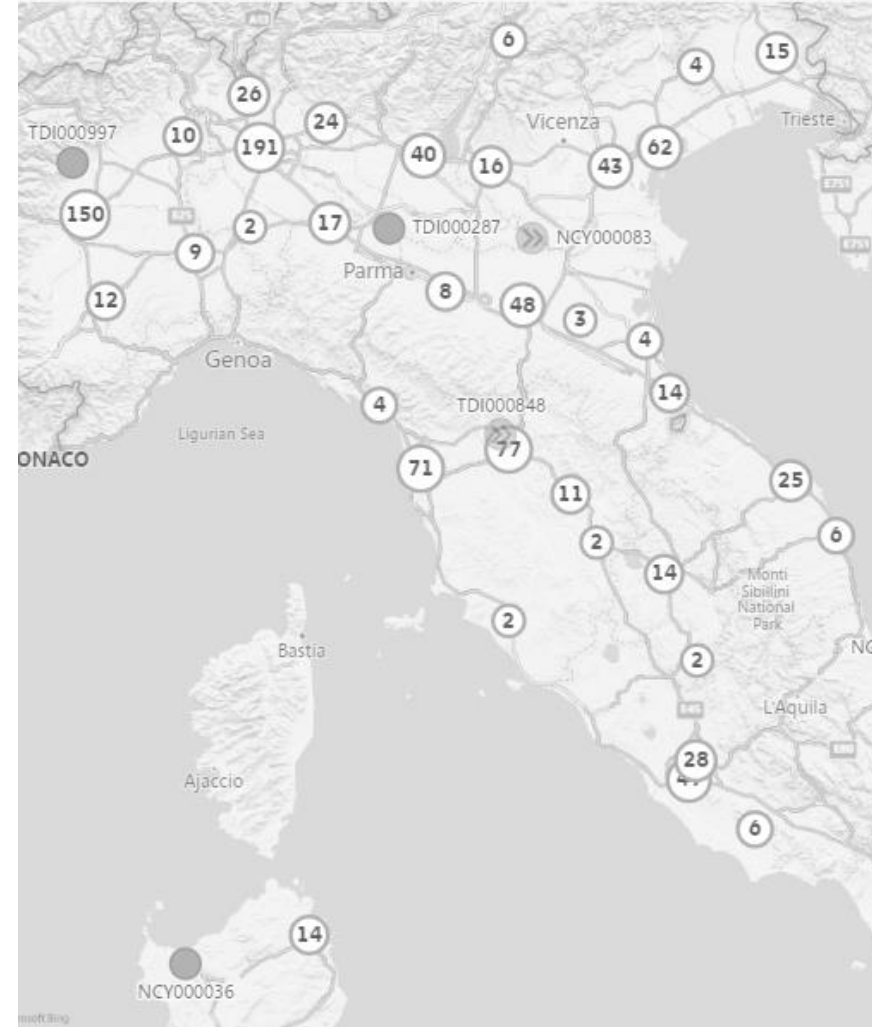
**SHIPMENTS & CUSTOMER INTERACTION**



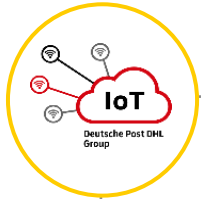
**DIGITALIZATION OF OPERATIONAL ASSETS**



# Digitalization of Assets – Real-time tracking of critical assets improves asset utilization and increases operational efficiency



# IoT-enabled trackers at DHL Express Hub Leipzig



## Trackers for Ground Support Equipment (GSE)



GSE is constantly in motion and can thus be challenging to track & locate

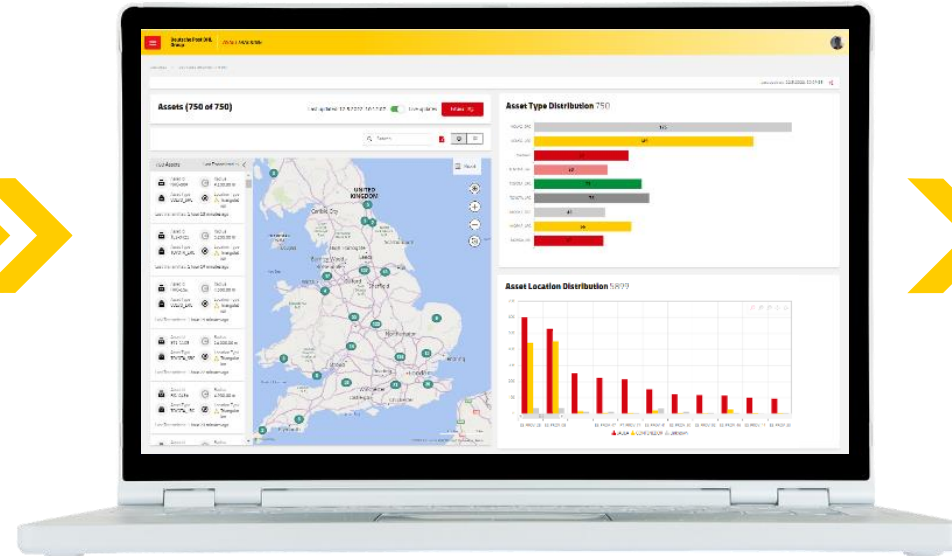
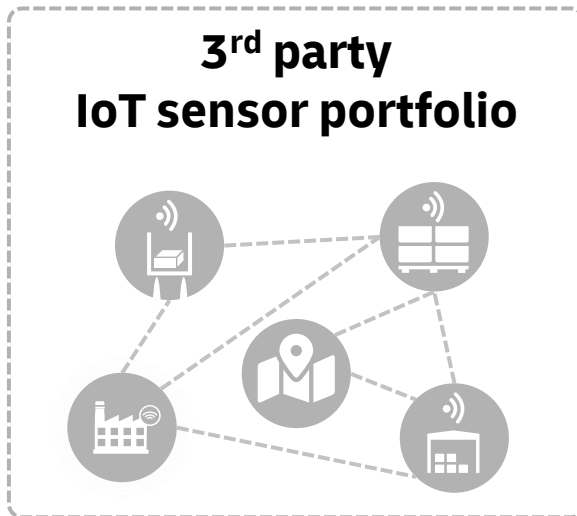


IoT-enabled GPS tracker help us to find available GSE for loading and unloading an aircraft



Sensors then sent to Group IoT platform

# The DHL IoT Platform provides real-time transparency on critical assets, equipment and shipments across all use cases



**DHL customer facing portals**

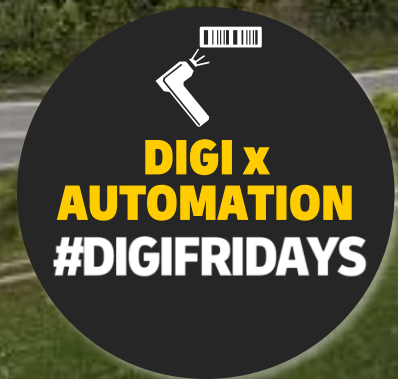
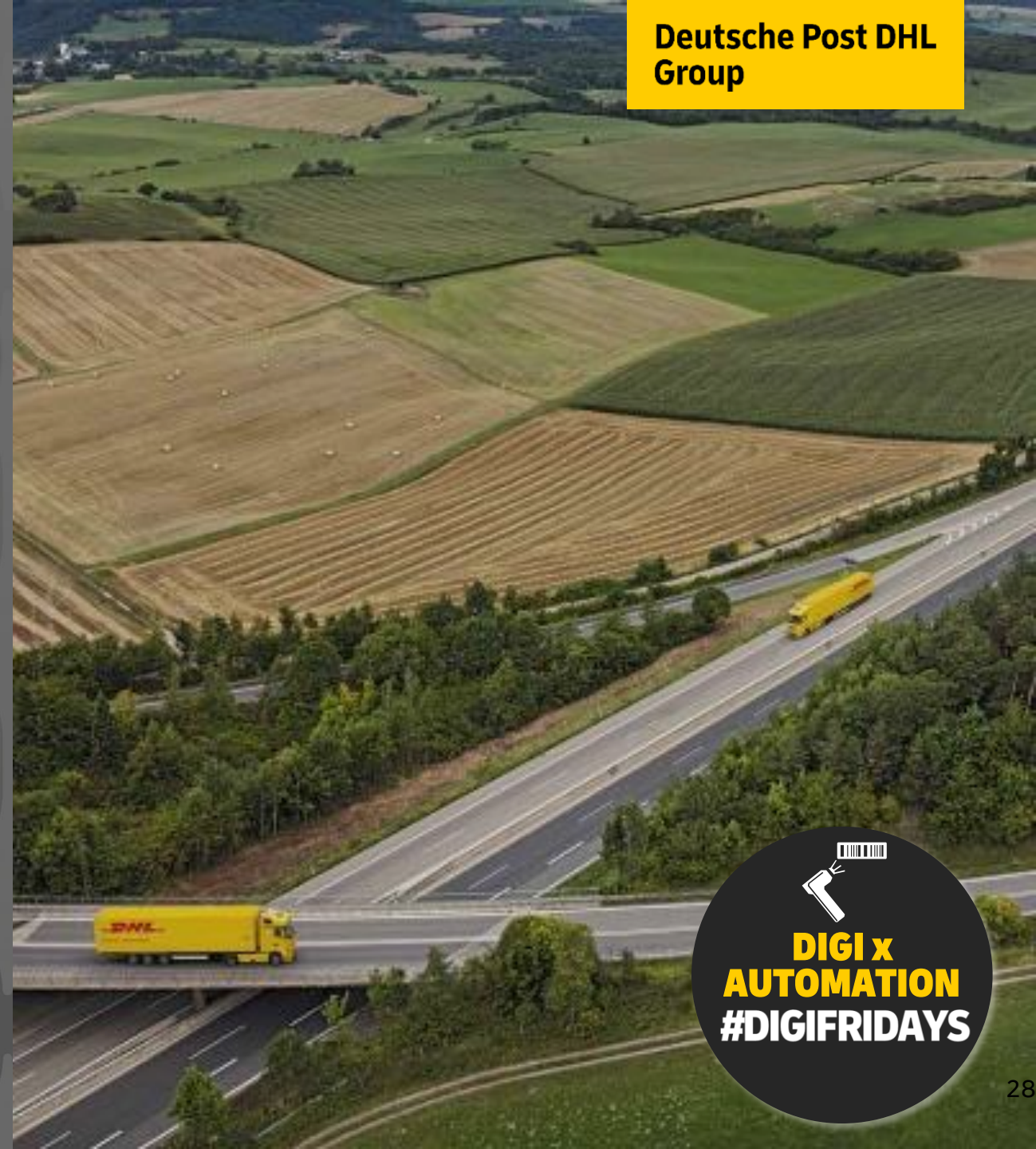
**DHL internal operations**

# GET TO KNOW EVO AND RAPTOR

HOW AUTOMATION AND ARTIFICIAL  
INTELLIGENCE DRIVE OPERATIONAL  
EFFICIENCIES AT DHL FREIGHT

STEFANO ARGANESE

Chief Transformation Officer  
DHL FREIGHT



# Automation and AI at DHL Freight, our leading asset-light road freight business

## Automation Key Aspects

Harmonized Process

Unified Data

Rules & Algorithm

## Today's Automation Showcases



# “EVO” creates a harmonize data basis and enables automation of multiple tasks in our value chain



## DHL FREIGHT TRANSPORT MANAGEMENT SYSTEM

**29**  
Countries

**5 K**  
Users

**14 M**  
Orders

One system, one database, full transparency

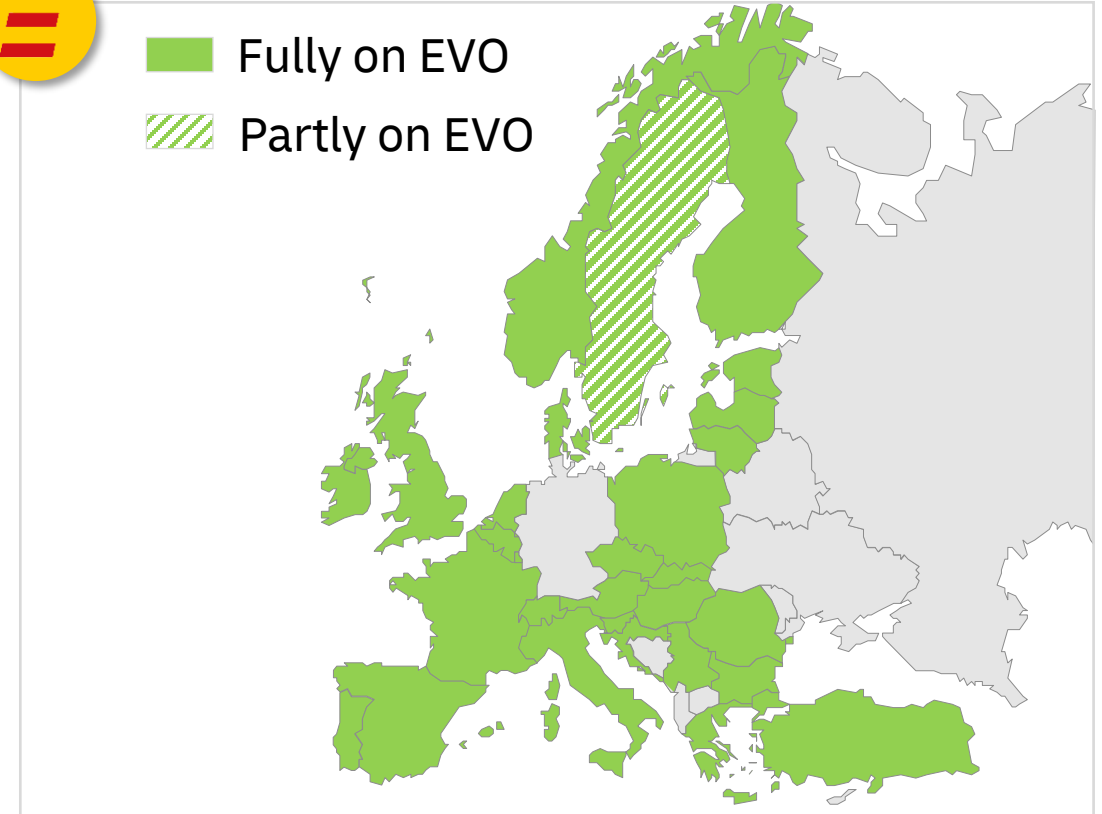
Automation speeds up operational tasks & reduces administrative tasks

By DHL Freight, for DHL Freight  
A specific road freight solution fitting our business

# With EVO we see very positive results and are targeting to finish the rollout next year



<b>Quality</b> Less mistakes	<b>Automated invoicing</b> ~27%p increase
<b>%EDI* auto-confirmed</b> ~10%p increase	<b>DSO</b> reduced



**Complete roll-out expected in 2024**

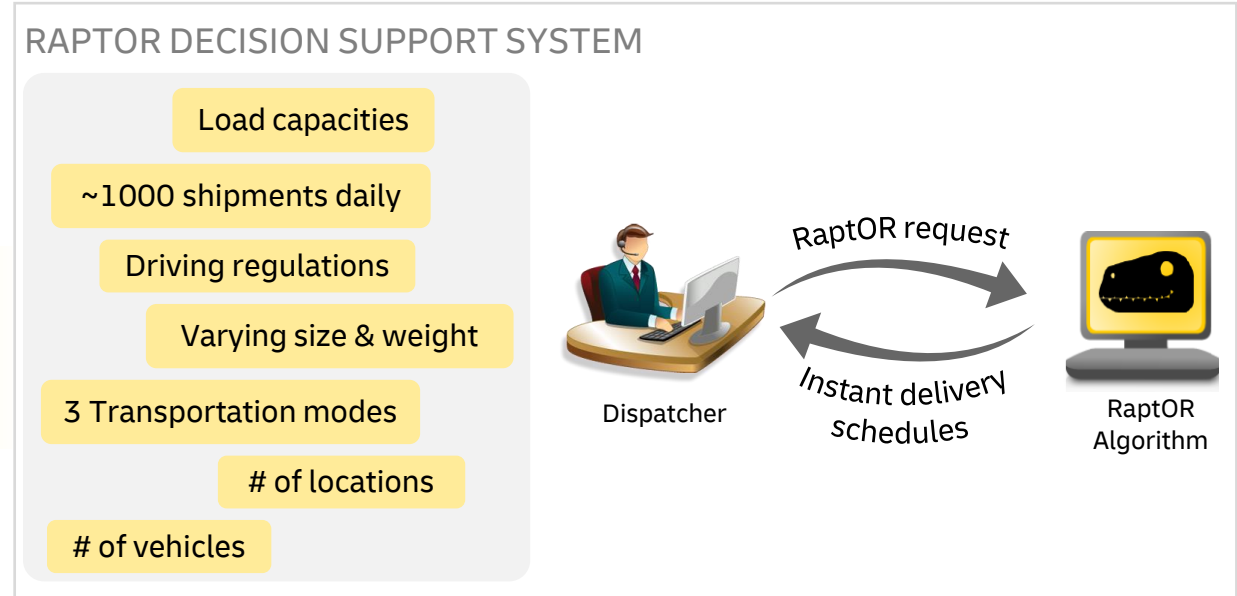
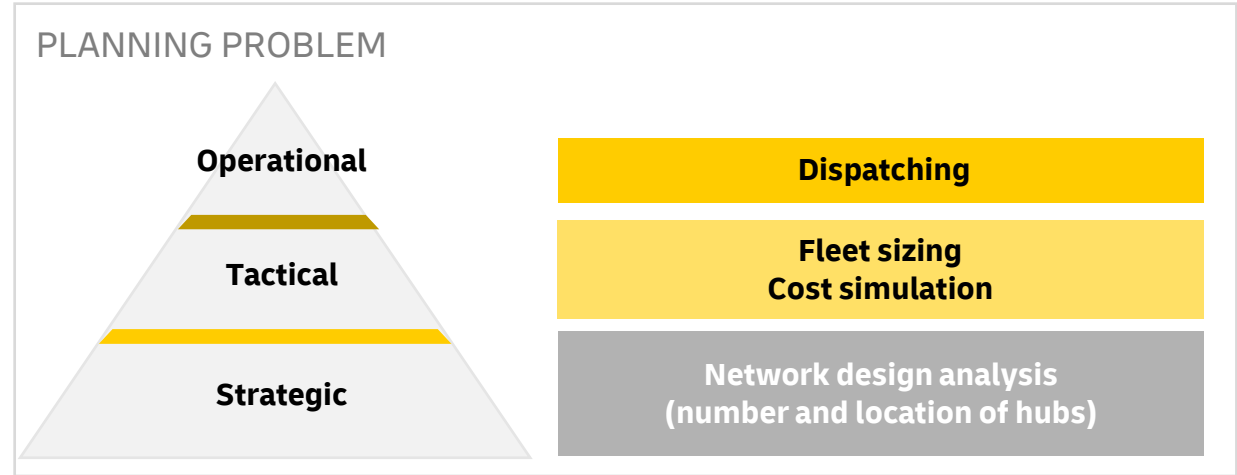
\*EDI: Electronic Data Interchange

# Routing Algorithm for Planning Transportation



**Help dispatchers assigning hundreds of orders to delivery vehicles daily using AI**

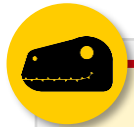
**Integration into dispatcher's standard work environment**  
**Close feedback loops continuously improving results**





# Routing Algorithm for Planning Transportation

## Achieving cost reductions and operational efficiencies via AI



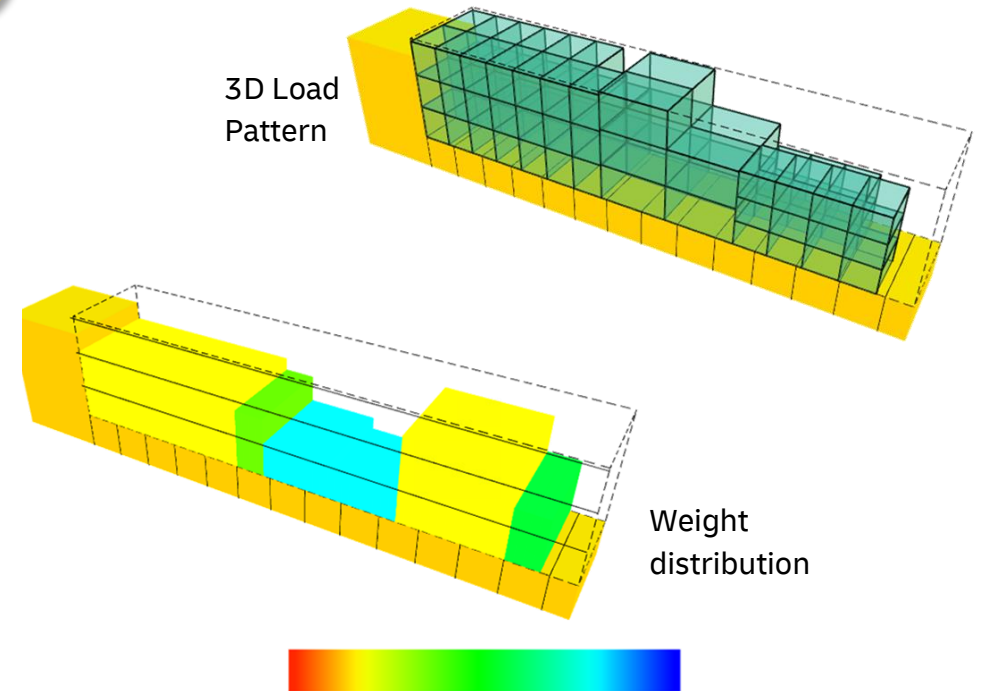
**-92%**

Less time spend  
for dispatching

**Driving  
Distance**  
decreased

**Load Factor**  
optimized

**-8%**  
Reduced CO2  
emission



# OPERATIONAL EFFICIENCY FUELED BY HYPER- AUTOMATION

DIGI X AUTOMATION

#DIGIFRIDAYS

